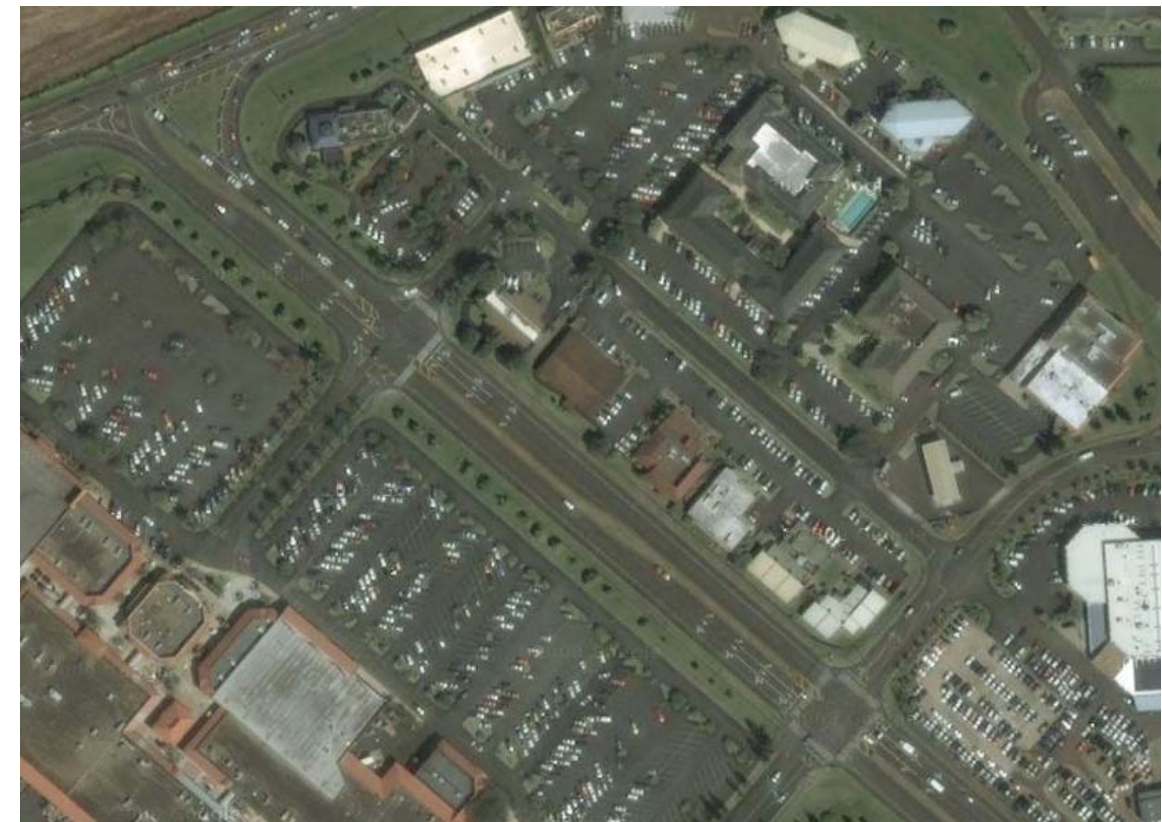


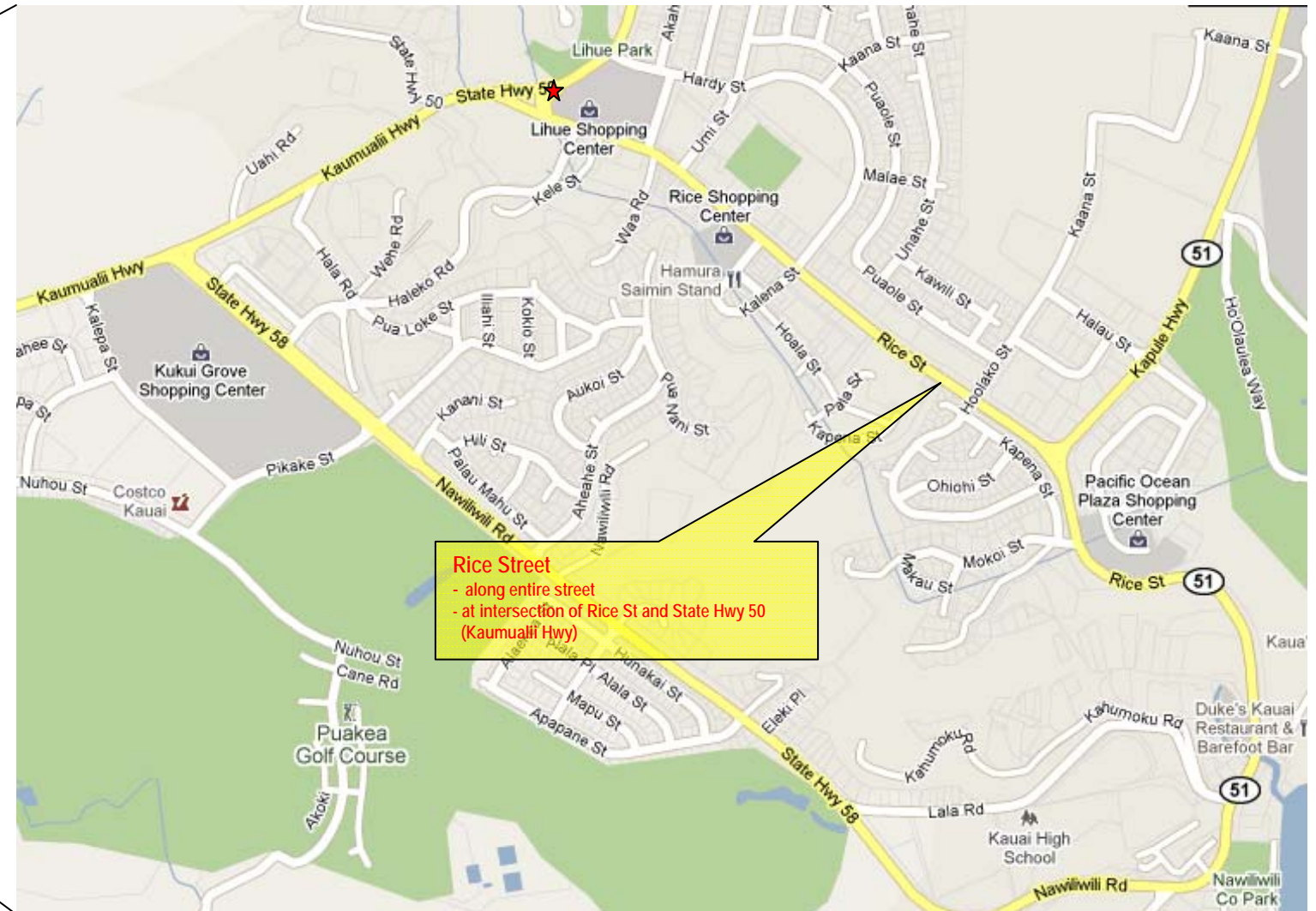
Nawiliwili Road
- from school to Kukui Grove Shopping Center
- from from the harbor to the park



Public Comments:

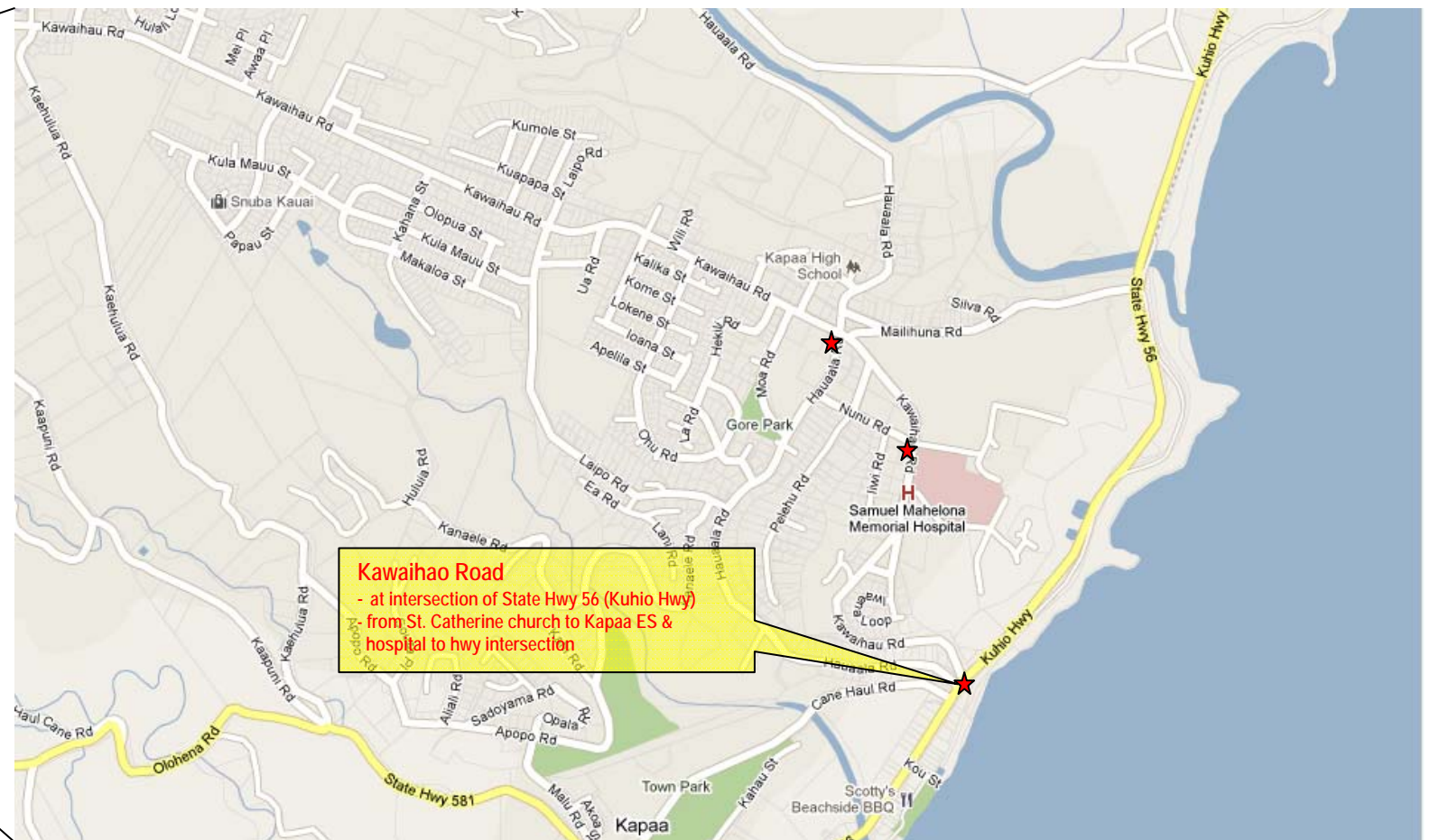
- There is need for a walkway from the harbor to the town. Ship passengers don't have enough room to walk into Lihue. There is sidewalk from Matson to the shopping area but none from there on.
- No sidewalks from school to Kukui Grove center.
- Need connecting pedestrian access from Nawiliwili to downtown Lihue.
- Harbor to park (near Nawiliwili Harbor). Sidewalk from Harbor to Rice St.
- Important to develop complete streets on main thoroughfares - Kuhio Hwy, Kaumualii Hwy, Ahukini Rd, Rice St, **Nawiliwili Rd.**





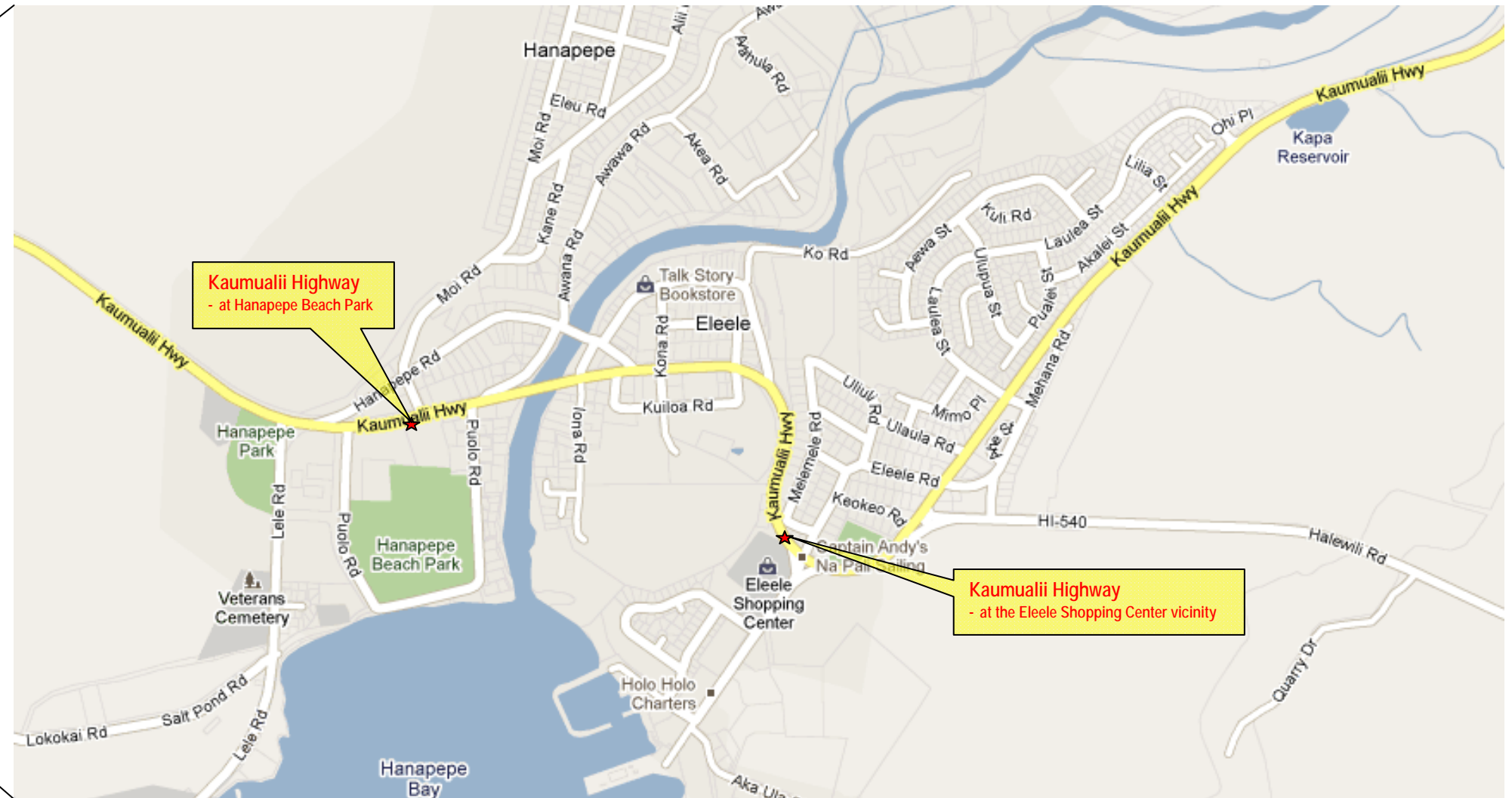
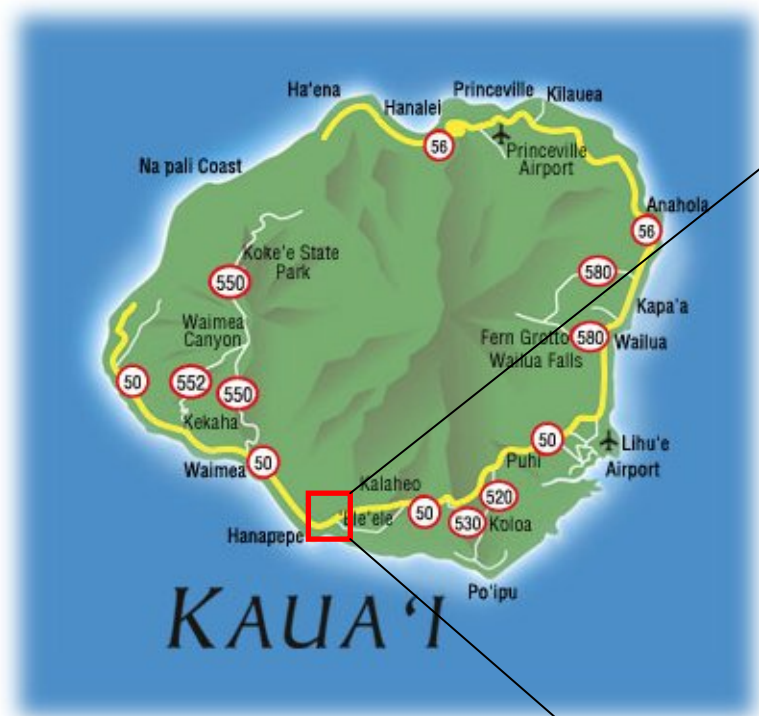
Public Comments:

- Connect major tourist areas (i.e Rice St to shopping).
- Important to develop complete streets on main thoroughfares - Kuhio Hwy, Kaumualii Hwy, Ahukini Rd, **Rice St**, Nawiliwili Rd.
- Pedestrian walk sign intersection of Hwy. 50/56.
- Sidewalk from Harbor to Rice St.



Public Comments:

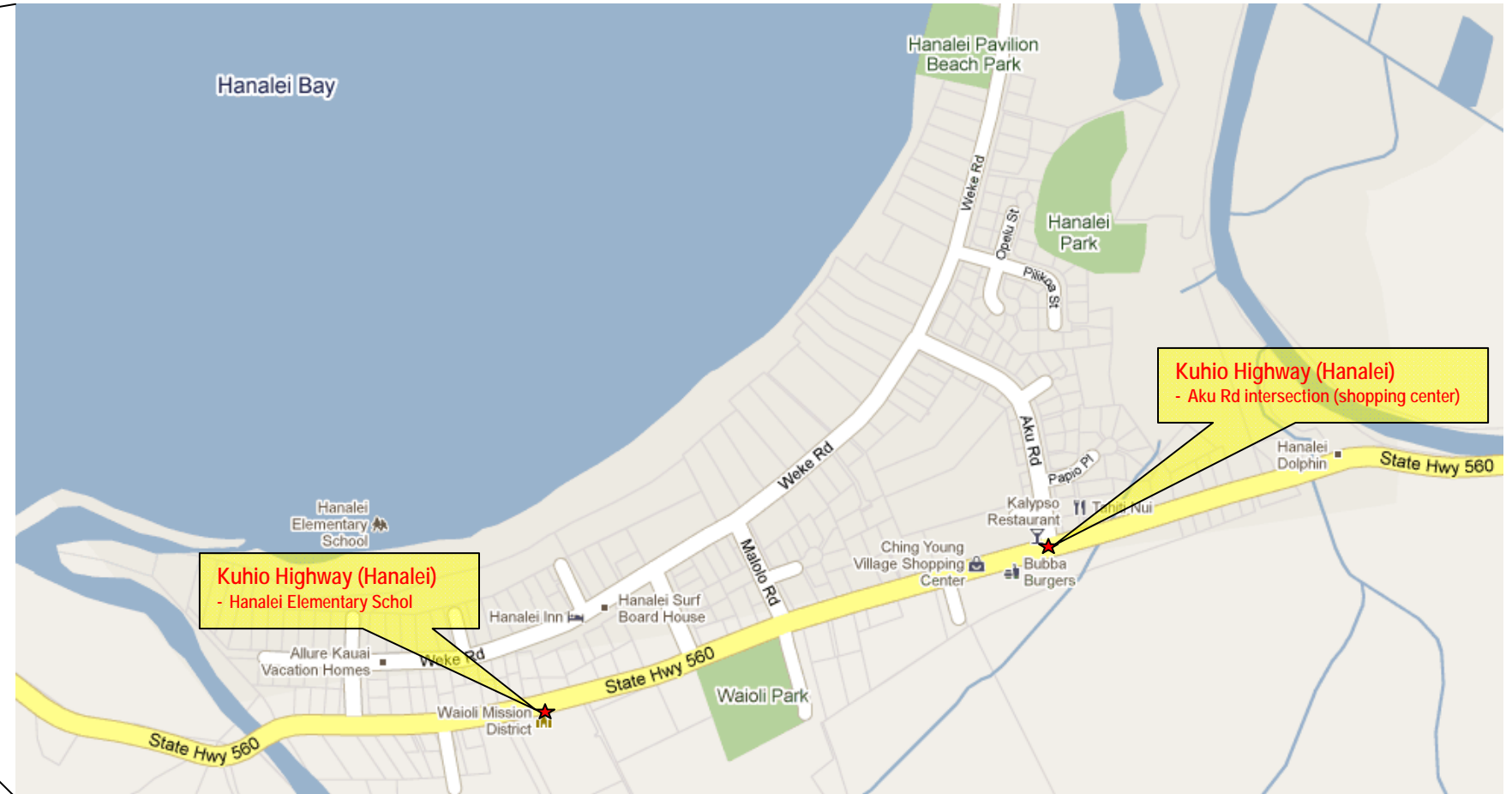
- Kawaihau Rd neighborhoods don't have safe access to cross the hwy. (Kapaa) need path from school down to multiuse path.
- Kawaihau Rd needs a maintained large sidewalk desperately from Highway to Kahuna Rd.
- Ped bridge across Kuhio Hwy from Kawaihau Rd?? Very busy, very dangerous crossing. Provides access to school and hospital.
- We have a specific concern regarding the pedestrian/bicycle path at the "end" of Kawaihau Rd. just past the school and hospital - the path simply ends and there is no "safe" path down to the highway for either pedestrians or bicyclists - Kawaihau Rd serves as an arterial for a large segment of the population - it is basically the only road down to the highway for a great number of people.
- Kaua'i area pedestrian hazard spots from observations in the past 5 years: at Kuhio Hwy - Kawaihau Road intersection.
- Create downhill path Kawaihau to Kuhio bridge.
- Safe path to walk or bike down to Kuhio Highway from upper Kawaihau Rd. Crosswalk going over highway to bike path.
- Kawaihau Rd crosswalk across hwy very dangerous.
- Kealia crosswalk dangerous. (East, near St Catherine School).



Public Comments:

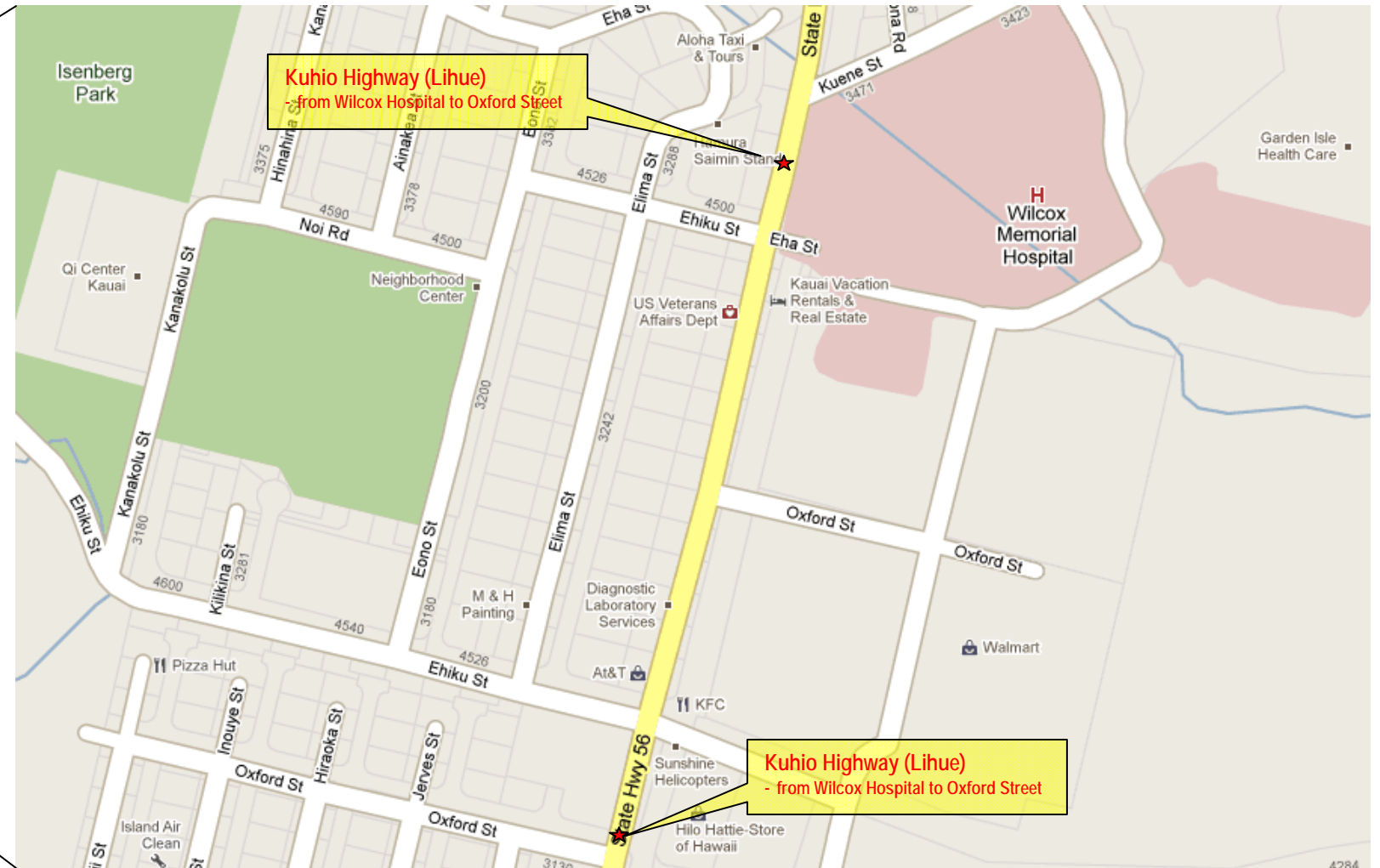
- Need connectivity to Hanapepe/Eleele Shopping Center.
- In Hanapepe there is a drainage culvert below Kaumualii Hwy that could be used/adapted to be a split grade pedestrian crossing. This will connect Mauka Hanapepe to Makai attractors.
- No sidewalks along either side of Kaumualii Hwy in **Eleele**, Kalaheo, **Hanapepe**, Kekaha. No sidewalks along major feeder streets to main highway, especially in **Eleele**, **Hanapepe (Moi Rd)**, Waimea. Need for coastal multi-use path between Eleele, Port Allen, Hanapepe, Salt Pond Park, Burns Field. Had separation between roadway and pedestrians for certain segments along Kaumualii Hwy.



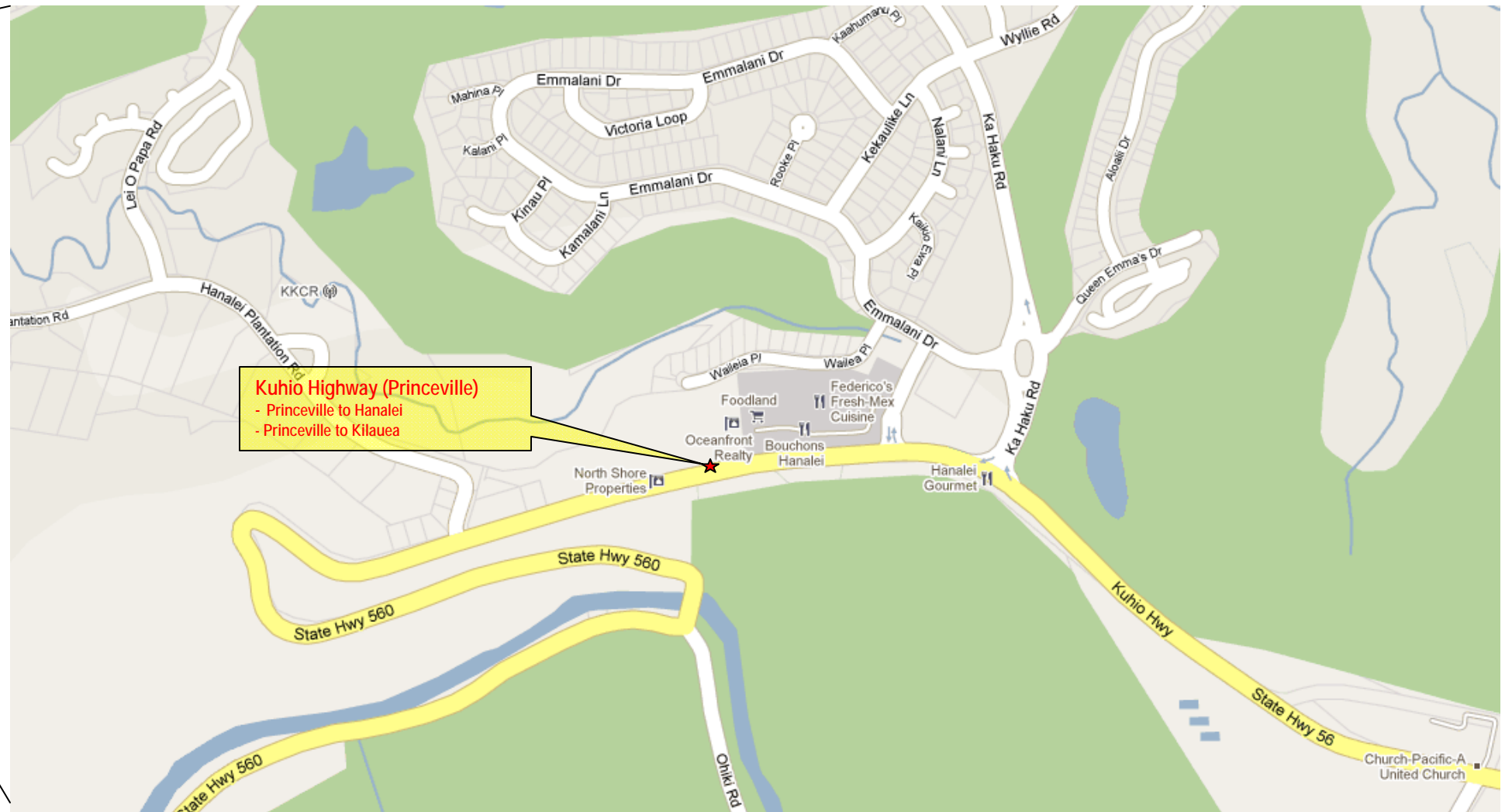


Public Comments:

- Need sidewalk Aku Rd Beach to hwy.
- Hanalei Elem (safe route to school). Ped connection from Hanalei to Princeville.
- Propose the possibility of a ped friendly sidewalk from the Hanalei Dolphin Center to the Tahiti Nui. Presently, the public pedestrian sidewalk ends at the Tahiti Nui, leaving a dangerous gap for pedestrians to continue walking safely to the additional Hanalei restaurants and shops, ending at the Hanalei Dolphin Center. The vehicle traffic along this non-sidewalk friendly stretch of Kuhio Highway is constant and fast. There is no shoulder and the buffalo grass is overgrown onto stretches of the street so pedestrians cannot walk safely along this stretch of the highway.



- Public Comments:
- High hazard walking. No shoulder & sidewalk (Kuhio Hwy [56], near Wilcox Mem. Hosp. to Laukona St).
 - Sun Village Elderly Community no sidewalks. No sidewalks from neighborhood center.
 - Gap in sidewalk between Hilo Hattie & Walmart (on 56 in Lihue).
 - Sidewalk needed on Kuhio to connect sidewalk from Hilo Hattie's to Wilcox Hospital driveway.



- Public Comments:
- Need North Shore multi-use paths (between 560 & 56).
 - Very concerned for the safety of pedestrians and bicyclists on the north shore. Especially dangerous is the roadway between Princeville and the Hanalei Bridge.
 - Need bike/ped option from Princeville to Hanalei.
 - Walking or biking connecting Princeville & Hanalei.





Public Comments:

- Sidewalk from KCC to shopping (near Kauai Community College). Sidewalk new Safeway to Kukui (near Kukui Grove Shop. Ctr.)
- Need continuous sidewalk from 7-11 in Hanamaulu to Lihue Civic Center.
- Sidewalk does not exist on both sides uninterrupted (near Lihue Neighborhood Center).
- Needs sidewalk from KCC to Lihue Civic Center (near Kauai Community College).

