





# The Statewide Pedestrian Master Plan

FEDERAL-AID PROJECT No. SP8-0010(31)

CH2MHILL

**Public Workshop Series #1**





## 1. Welcome and Introduction

Statewide Pedestrian Master Plan



CH2MHILL





## 2. Workshop Format

Statewide Pedestrian Master Plan

1. Welcome
2. Introductory Presentation
3. Small Group Exercise
4. Small Group Presentations
5. Q/A Session




CH2MHILL



## Workshop Goals

Statewide Pedestrian Master Plan

- Inform the community on the Statewide Pedestrian Master Plan and explain how they can be involved
- Review existing conditions for the State highway pedestrian system
- Learn about community values on walking opportunities and issues on the State highway pedestrian system





CH2MHILL



## Project Background

Statewide Pedestrian Master Plan

- 3<sup>rd</sup> in nation for largest proportion of pedestrian deaths
- 20% of all traffic deaths are pedestrians (2007-2008)
- Promotes multi-modal use for all highway users
- Ties into other efforts, such as the SHSP and CS

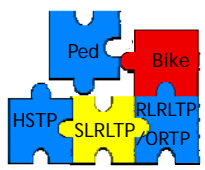
CH2MHILL


## Project Goals

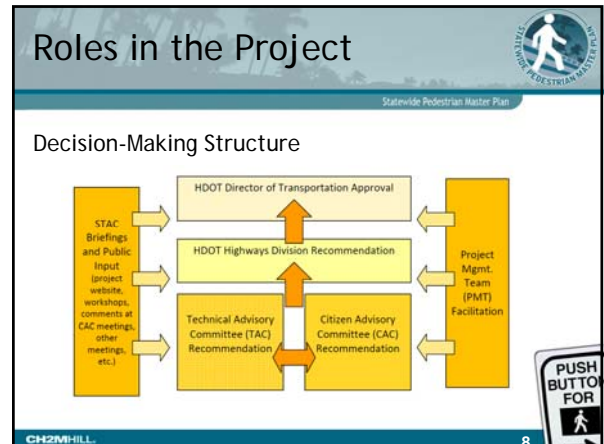
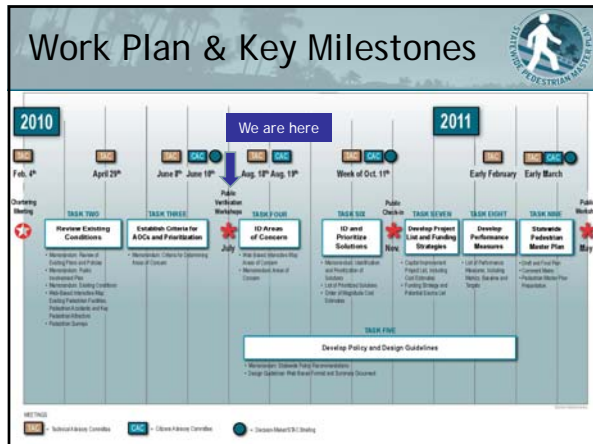
Statewide Pedestrian Master Plan

- Improve pedestrian safety and mobility
- Involve the public and stakeholders
- Develop projects and programs
- Provide policy and design guidance
- Integrate with other planning efforts



CH2MHILL





## Ways to Get Involved

- Provide Input at Public Meetings
- Contact CAC Members or attend CAC Meetings
- Visit Project Website ([www.hawaiiipedplan.com](http://www.hawaiiipedplan.com)) to stay updated on project progress and provide comments
- Participate in a future Web Survey



## Areas of Concern

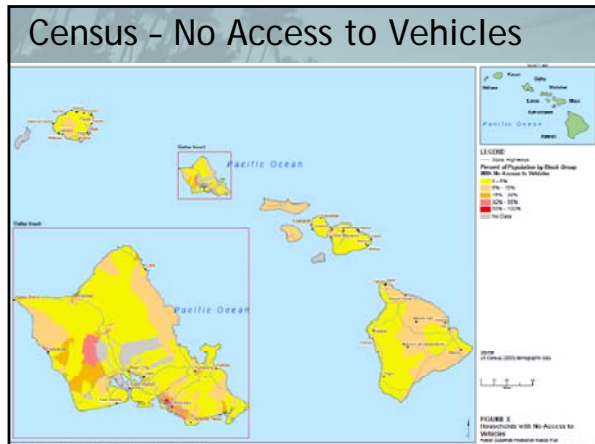
### Factors for Developing Areas of Concern:

- Connectivity
- Accessibility
- Environmental Justice
- Safety

## Existing Conditions

- HDOT Pedestrian System (sidewalks, shared-use paths)
- Pedestrian Attractors
- Bus Routes
- Pedestrian Hot Spots
- Rural and Urban Areas
- Land Use
- Census Information





### Project Prioritization

Statewide Pedestrian Master Plan

Criteria:

- Connectivity to Pedestrian Attractors
- Pedestrian Safety
- Environment
- Land and Access Impacts
- Cost
- Availability of funding/resources
- Environmental Justice



CH2MHILL 20

### 3. Small Group Exercise


Statewide Pedestrian Master Plan

Part 1

- Split up into groups
- Identify on maps
  - Any corrections
  - Any missing pedestrian attractors
  - Any areas with issues or opportunities
  - Any other notes?
- Develop a 3-minute presentation describing the group discussion

Part 2

- Rank the area of concern factors and prioritization criteria in order of importance to you.  
*\*The worksheets will be collected by staff.*



CH2MHILL 21

### 4. Small Group Presentation

Statewide Pedestrian Master Plan



- A 3-minute presentation describing the discussion and results from the small group exercise




CH2MHILL 22

### 5. Question and Answer

Statewide Pedestrian Master Plan






CH2MHILL 23

### 6. Adjourn

Statewide Pedestrian Master Plan

Mahalo for Your Participation!

CH2MHILL 24